

# Mongolian keyboard layout

Welcome to Mongolian keyboard layout. This document explains how to install and use the keyboard for your MacOSX. Appendix is included to illustrate the layouts of each character for your reference.

## Table of content

<b>1. Pre-requisites</b> .....	<b>2</b>
<b>2. Installation</b> .....	<b>2</b>
<b>3. How to enable the “Mongolian” keyboard input</b> .....	<b>2</b>
<b>Appendix</b> .....	<b>4</b>

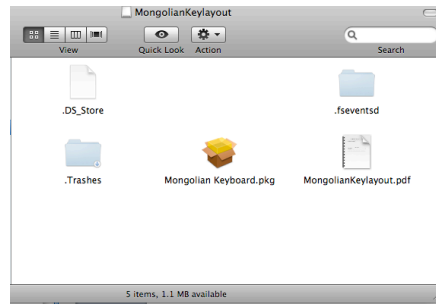
Copyright Mountain Edge Inc.  
All rights reserved 2012

## 1. Pre-requisites

- OS X 10.5 or better


## 2. Installation

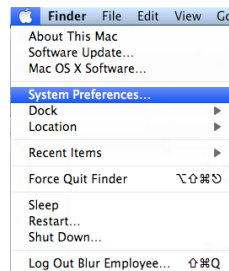
1. Double click on “Mongolian Keyboard Installer.pkg”

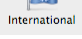


2. Follow the instructions

## 3. How to enable the “Mongolian” keyboard input

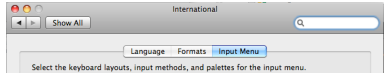
1. Start “System Preferences” by selecting from  menu.



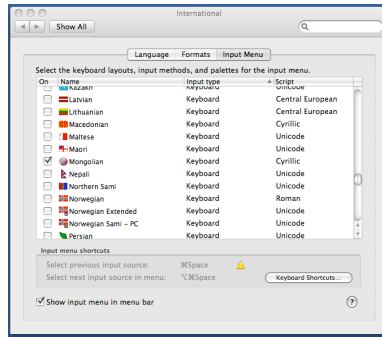
2. Click on the “International” icon  from “System Preferences”.



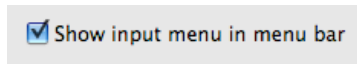
3. Click on *“Input Menu”*.



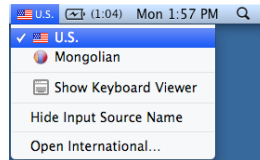
4. Scroll down and place a check mark next to the *“Mongolian”* to turn *“On”* the keyboard.



5. Make sure *“Show input menu in menu bar”* at the bottom of the dialog box is checked.

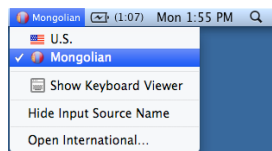


6. Once checked, you should see the following icons at the top of your screen.



(Note: currently U.S. keyboard is selected)

7. You can switch between U.S. keyboard and Mongolian keyboard by selecting it from the input menu in menu bar.



(Note: currently Mongolian keyboard is selected)

8. Now you should be able to type Mongolian characters in all Macintosh applications. *(Useful trick: you can select the “Show Keyboard Viewer” from the input menu to see the “floating” keyboard layout)*

## Appendix

Normal mode:

esc	F1	F2	F3	F4	F5	F6	F7	F8	F9	F10	F11	F12		
ю	1	2	3	4	5	6	7	8	9	0	е	щ	⌫	
→	ф	ц	у	ж	э	н	г	ш	у	з	к	ь	\	
⌵	й	ы	б	ө	а	х	р	о	л	д	п	↶		
⌴	я	ч	ё	с	м	и	т	ь	в	/		⌴		
Fn	^	⌵	⌘						⌘	⌵		↑		
												←	↓	→

Shift mode:

esc	F1	F2	F3	F4	F5	F6	F7	F8	F9	F10	F11	F12		
Ю	№	-	"	Ғ	:	.	_	,	%	?	Е	Щ	⌫	
→	Ф	Ц	У	Ж	Э	Н	Г	Ш	У	З	К	Ь		
⌵	Й	Ы	Б	Ө	А	Х	Р	О	Л	Д	П	↶		
⌴	Я	Ч	Ё	С	М	И	Т	Ь	В	/		⌴		
Fn	^	⌵	⌘						⌘	⌵		↑		
												←	↓	→

Caps lock mode:

esc	F1	F2	F3	F4	F5	F6	F7	F8	F9	F10	F11	F12		
Ю	1	2	3	4	5	6	7	8	9	0	Е	Щ	⌫	
→	Ф	Ц	У	Ж	Э	Н	Г	Ш	У	З	К	Ь	\	
⌵	Й	Ы	Б	Ө	А	Х	Р	О	Л	Д	П	↶		
⌴	Я	Ч	Ё	С	М	И	Т	Ь	В	/		⌴		
Fn	^	⌵	⌘						⌘	⌵		↑		
												←	↓	→